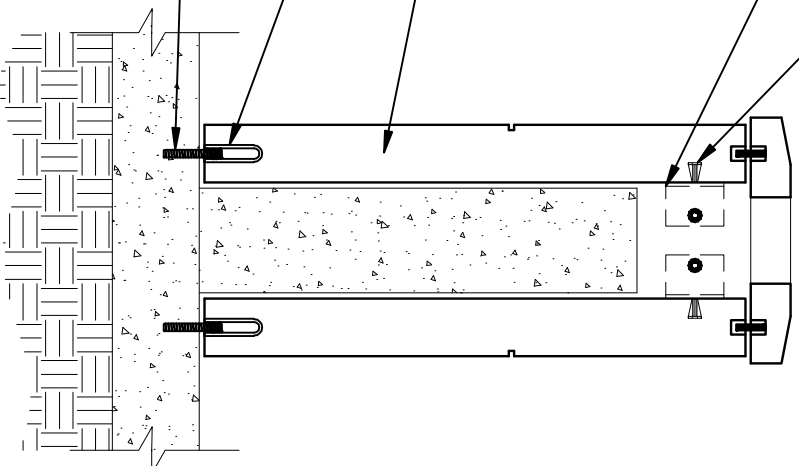


PLAN VIEW

TOP CONNECTION:
CAST IN INSERT (2) PER
PANEL.
ANGLE ATTACHED TO (2)
PANELS WITH BOLT TO
STAR INSERT. SEE PLAN
VIEW.

REBAR AS REQUIRED

BOTTOM CONNECTION:
CAST-IN INSERT. (2) PER
PIECE.
SCREW COIL ROD INTO
CAST-IN INSERT AND GROUT
SOLID IN FOUNDATION
BELOW.



4
BOL

BOLLARD CONNECTION

SCALE: 1"=1'-0"

