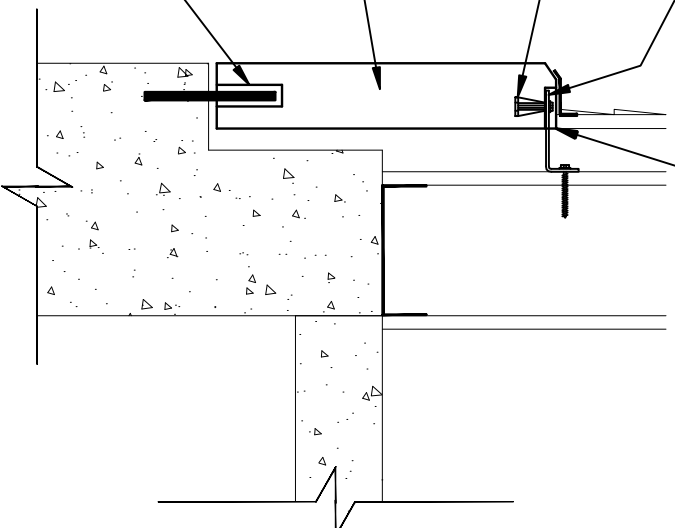


TOP CONNECTION:
 BOLT L-ANCHOR TO
 CAST-IN INSERT AND
 SCREW TO STUD BACKUP,
 CAST-IN INSERT

RECESS PROVIDED IN STONE TO
 RECEIVE CONNECTION ANCHOR.

REBAR AS REQUIRED

BOTTOM CONNECTION:
 DWEL PIN GROUTED SOLID
 IN PROVIDED HOLE IN
 STONE AND IN FIELD
 DRILLED HOLE IN
 FOUNDATION BELOW, 2 PER
 PIECE AT 5TH POINTS OF
 STONE.



2 BASE PANEL CONNECTION

BP SCALE: 1-1/2"=1'-0"