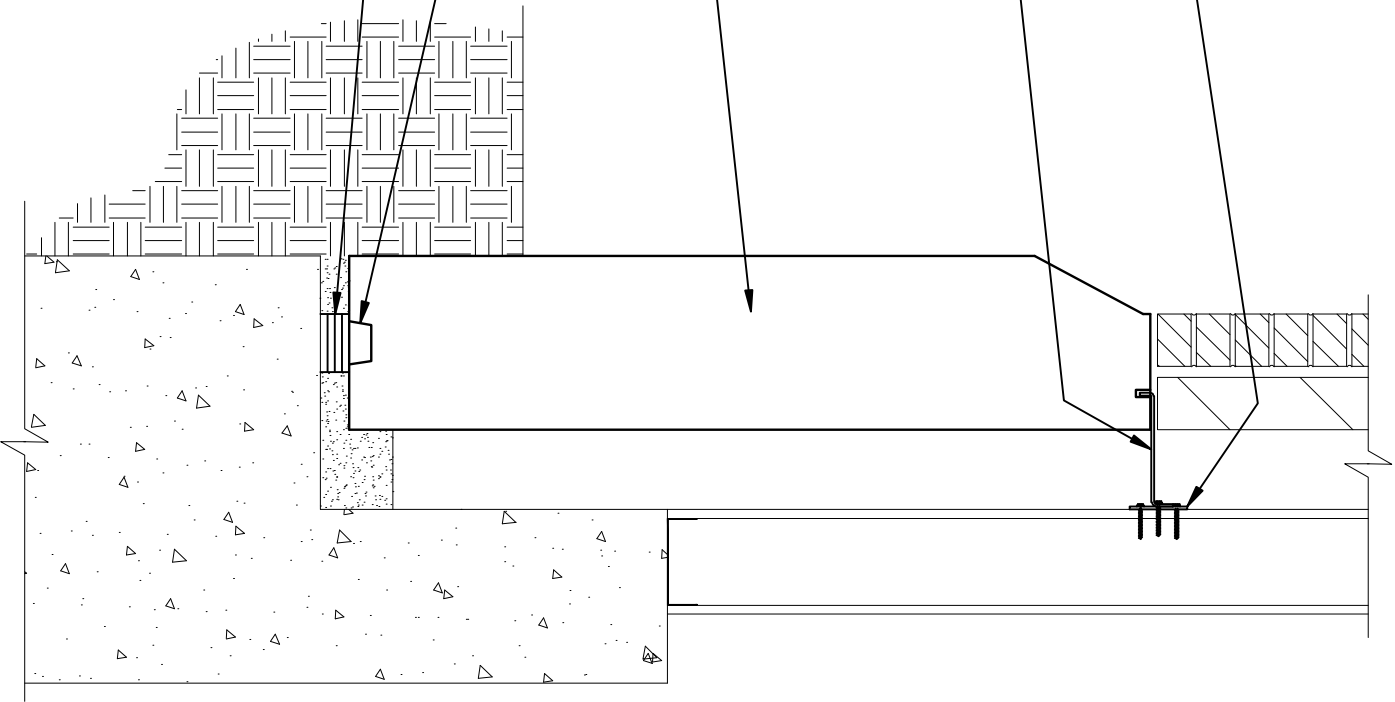


TOP CONNECTION:
PLATE SCREWED TO EA.
STUD. LOCATE AT EACH
L-ANCHOR. MIN. 2 PER
PIECE.
L-ANCHOR GRouted SOLID
IN CONT. SLOT IN STONE
AND SCREW TO PLATE.
MIN. 2 PER PIECE.

REBAR AS REQUIRED

BOTTOM CONNECTION:
CONTINUOUS GRout KEY
PROVIDE ADEQUATE SHIM
BEARING SURFACE. SHIM @
5TH POINTS FROM EA.
END FROM BEARING TYP.



3
BP

BASE PANEL CONNECTION

SCALE: 1"=1'-0"

