

TOP CONNECTION:
STRAP ANCHOR WELDED TO
EMBED ANGLE AND
FASTENED BACK TO STUD
WALL.

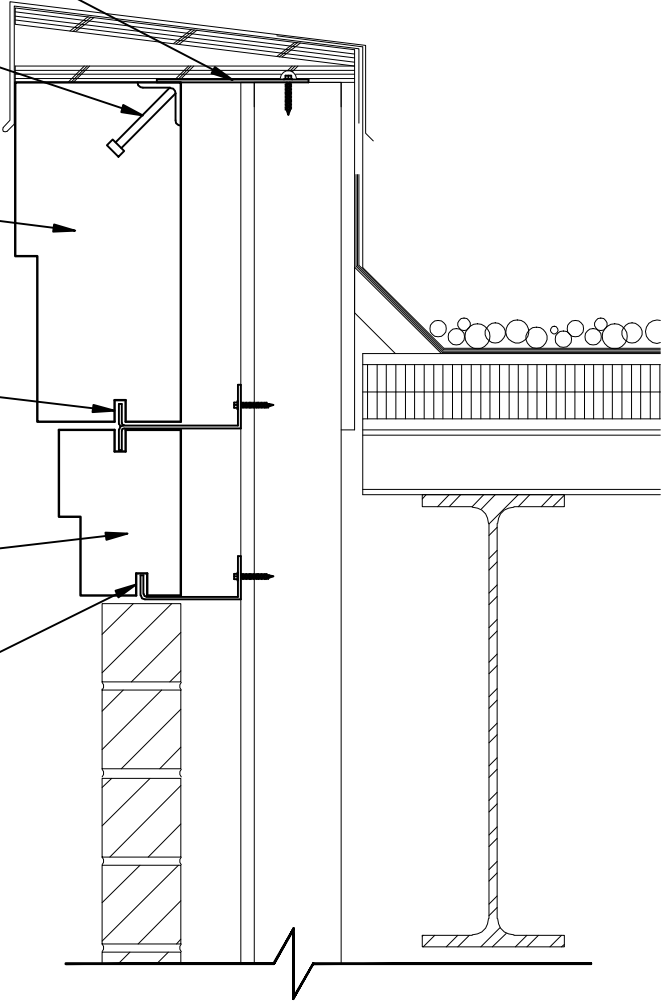
CAST-IN EMBED ANGLE.
(2 PER PIECE.)

REBAR AS REQUIRED

MIDDLE CONNECTION:
SPLIT-TAIL ANCHOR
GROUTED SOLID IN SLOTS
IN BOTH PCS OF STONE
AND BOLTED STUD BACKUP,
MIN. 2 PER PIECE.

REBAR AS REQUIRED

BOTTOM CONNECTIONS:
L-ANCHOR GROUTED SOLID
IN SLOT AND BOLT TO
STUD BACKUP, MIN. 2 PER
PIECE.



8
BAND

BAND CONNECTION

SCALE: 1-1/2"=1'-0"

