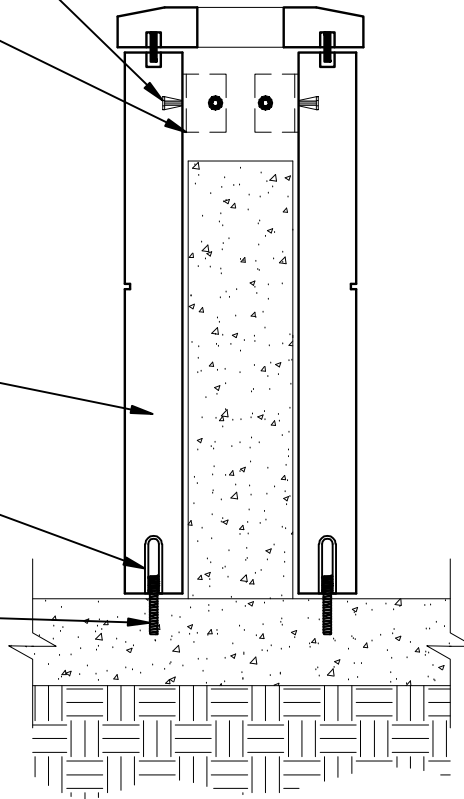


### PLAN VIEW

TOP CONNECTION:  
CAST IN INSERT (2) PER  
PANEL.

ANGLE ATTACHED TO (2)  
PANELS WITH BOLT TO  
STAR INSERT. SEE PLAN  
VIEW.



REBAR AS REQUIRED

BOTTOM CONNECTION:  
CAST-IN INSERT. (2) PER  
PIECE.

SCREW COIL ROD INTO  
CAST-IN INSERT AND GROUT  
SOLID IN FOUNDATION  
BELOW.



## BOLLARD CONNECTION

SCALE: 1"=1'-0"

