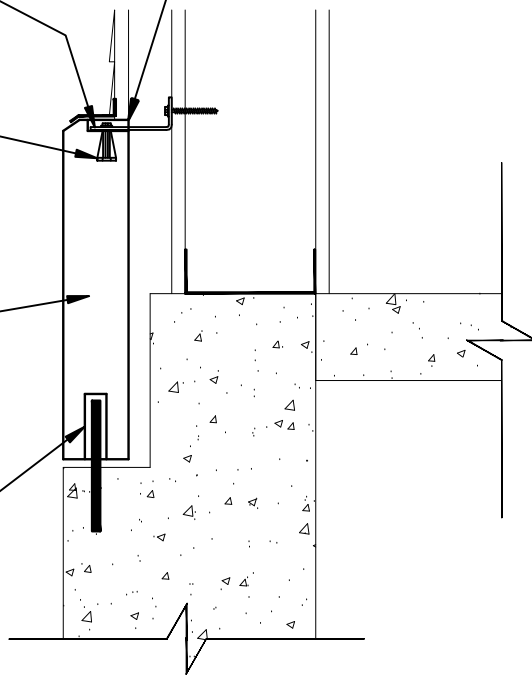


TOP CONNECTION:  
BOLT L-ANCHOR TO  
CAST-IN INSERT AND  
SCREW TO STUD BACKUP.  
  
CAST-IN INSERT

RECESS PROVIDED IN STONE TO  
RECEIVE CONNECTION ANCHOR.

REBAR AS REQUIRED

BOTTOM CONNECTION:  
DOWEL PIN GROUTED SOLID  
IN PROVIDED HOLE IN  
STONE AND IN FIELD  
DRILLED HOLE IN  
FOUNDATION BELOW. 2 PER  
PIECE AT 5TH POINTS OF  
STONE.



2  
BP

## BASE PANEL CONNECTION

SCALE: 1-1/2"=1'-0"

