

TOP CONNECTION:
BOLT STRAP ANCHOR TO
CAST-IN INSERT AND WELD
TO BEARING ANGLE.

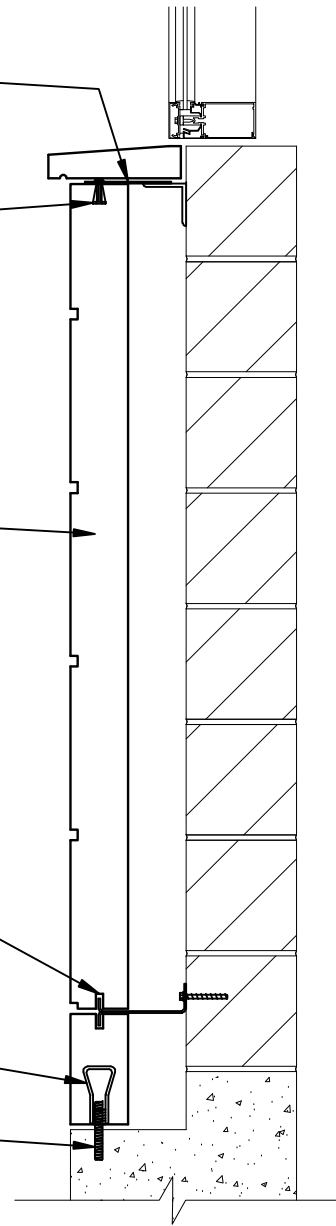
CAST-IN INSERT

REBAR AS REQUIRED

MIDDLE CONNECTION:
SPLIT-TAIL ANCHOR GROUTED
SOLID IN PROVIDED SLOTS
IN BOTH PCS OF STONE AND
BOLTED BACK TO CMU
BACKUP

BOTTOM CONNECTION:
COIL CAST-IN INSERT

COIL ROD SCREW TO
CAST-IN INSERT AND GROUT
SOLID IN FIELD DRILLED
HOLE IN FOUNDATION
BELOW.



8
BP

BASE PANEL CONNECTION

SCALE: 1"=1'-0"

