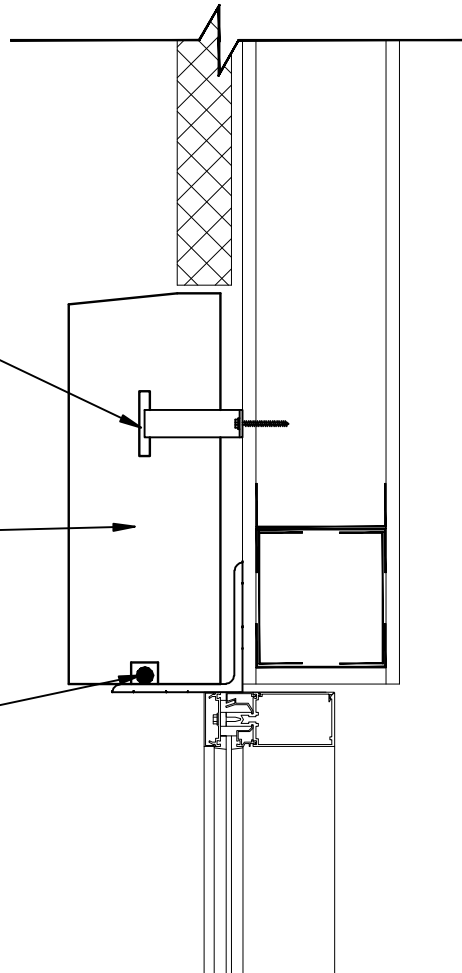


TOP CONNECTION:
L-ANCHOR GROUTED SOLID
INTO SLOT AND FASTENED
TO STUD BACKUP. 1 AT
EACH END OF STONE.

REBAR AS REQUIRED

BOTTOM CONNECTION:
WELDABLE BAR WELDED
TO BEARING ANGLE AND
GROUTED INTO CAST IN
SLOT ABOVE.



NOTE:
SILL NEEDS MASONRY OR
STONE ON EACH SIDE FOR
SIDE ANCHORS.



LINTEL CONNECTION

SCALE: 1-1/2"=1'-0"

