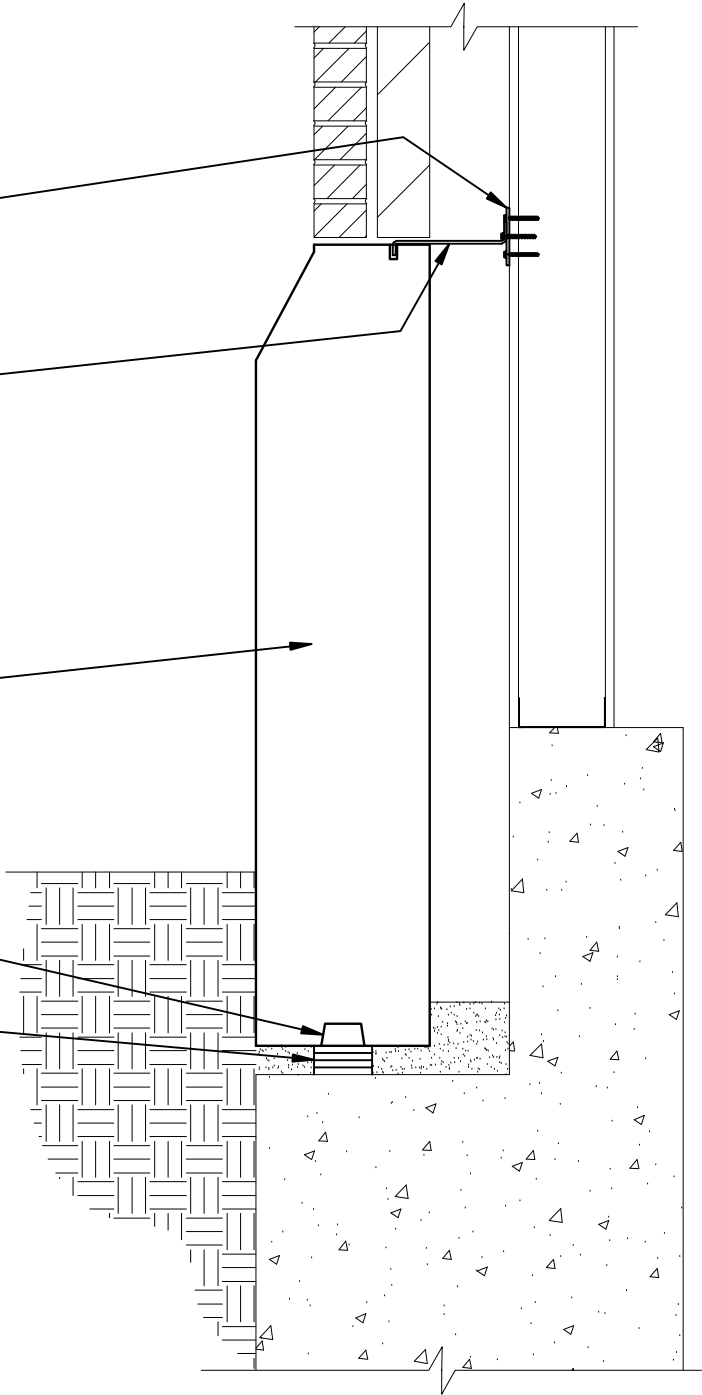


TOP CONNECTION:
PLATE SCREWED TO EA. STUD. LOCATE AT EACH L-ANCHOR. MIN. 2 PER PIECE.
L-ANCHOR GROUTED SOLID IN CONT. SLOT IN STONE AND SCREW TO PLATE. MIN. 2 PER PIECE.

REBAR AS REQUIRED

BOTTOM CONNECTION:
CONTINUOUS GROUT KEY
PROVIDE ADEQUATE SHIM BEARING SURFACE. SHIM @ 5TH POINTS FROM EA. END FROM BEARING TYP.



3
BP

BASE PANEL CONNECTION

SCALE: 1"=1'-0"

