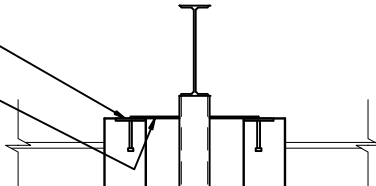


**PLAN VIEW**

TOP CONNECTION:  
CAST IN EMBED PLATE (1)  
PER PIECE.  
PLATE WELDED TO EMBED  
AND STRUCTURAL COLUMN.



REBAR AS REQUIRED

BOTTOM CONNECTION:  
CAST IN COIL LOOP  
INSERT, 2 PER PIECE  
COIL ROD SCREWED INTO  
CAST IN INSERT AND  
GROUTED SOLID IN  
FOUNDATION BELOW.

