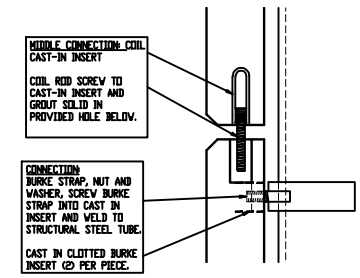


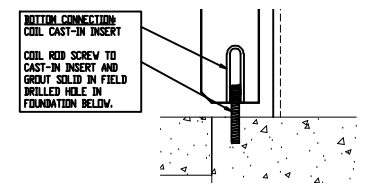
SECTION A/AA



MIDDLE CONNECTION: COIL CAST-IN INSERT
COIL ROD SCREW TO CAST-IN INSERT AND GROUT SOLID IN PROVIDED HOLE BELOW.

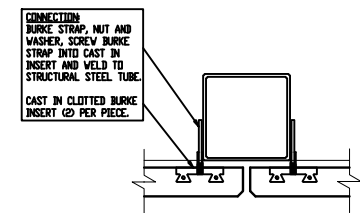
CONNECTION: BURKE STRAP, NUT AND WASHER, SCREW BURKE STRAP INTO CAST IN INSERT AND WELD TO STRUCTURAL STEEL TUBE.
CAST IN CLOTTED BURKE INSERT (2) PER PIECE.

DETAIL B/BB



BOTTOM CONNECTION: COIL CAST-IN INSERT
COIL ROD SCREW TO CAST-IN INSERT AND GROUT SOLID IN FIELD DRILLED HOLE IN FOUNDATION BELOW.

DETAIL C/CC



CONNECTION: BURKE STRAP, NUT AND WASHER, SCREW BURKE STRAP INTO CAST IN INSERT AND WELD TO STRUCTURAL STEEL TUBE.
CAST IN CLOTTED BURKE INSERT (2) PER PIECE.

PLAN DETAIL D/DD

PANEL CONNECTION
SCALE: 1"=1'-0"

ARTSTONE CONNECTIONS
PANELS-2

ARTSTONE
PHONE: (800) 847-8074 FAX: (800) 384-7771