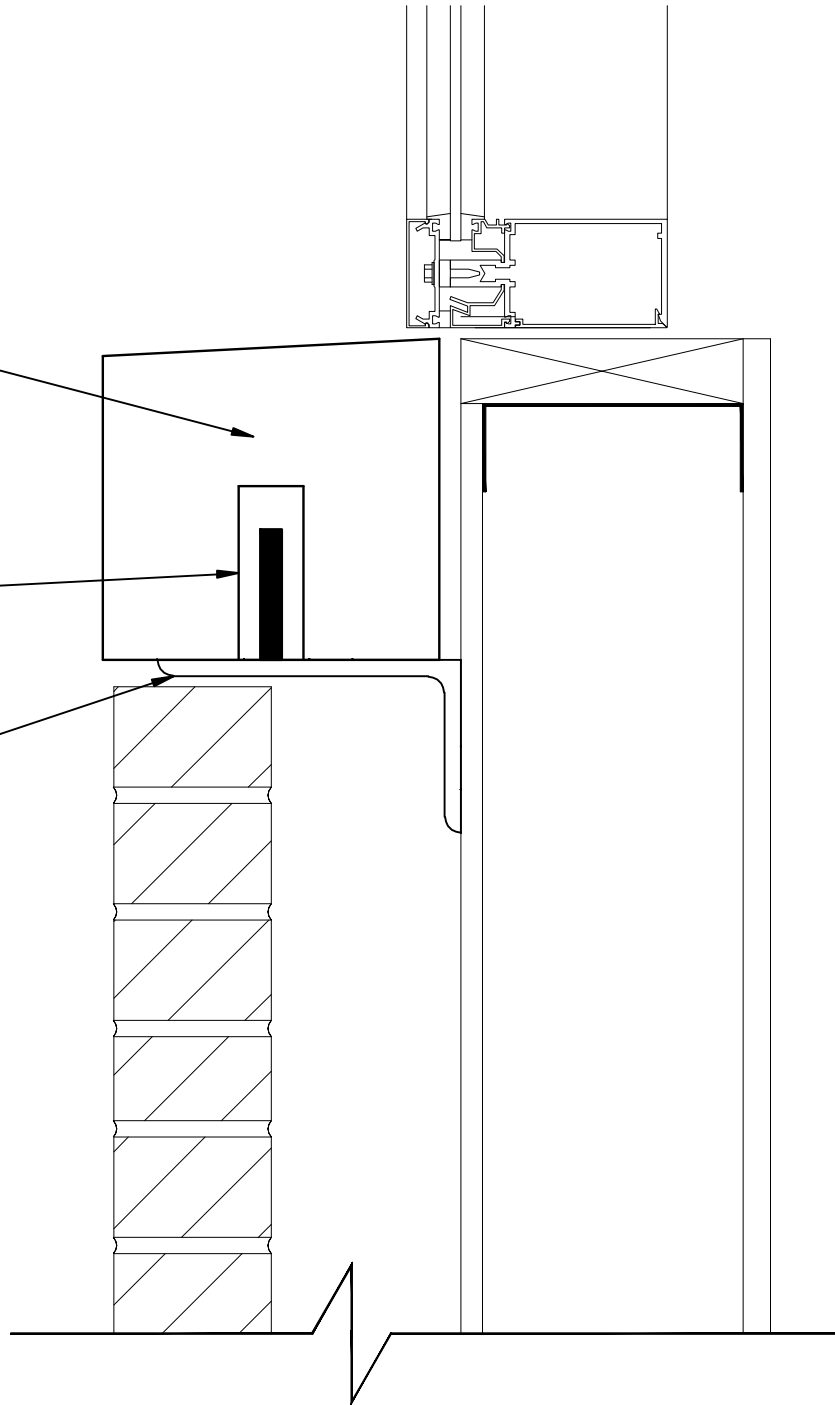


REBAR AS REQUIRED

CONNECTION:
DOWEL PIN WELDED TO
ANGLE AND GROUTED
SOLID IN HOLE IN STONE.
2 PER PIECE AT 5TH
POINTS IN STONE.

SUPPORT ANGLE



3
SILL

SILL CONNECTION

SCALE: 3"=1'-0"

